

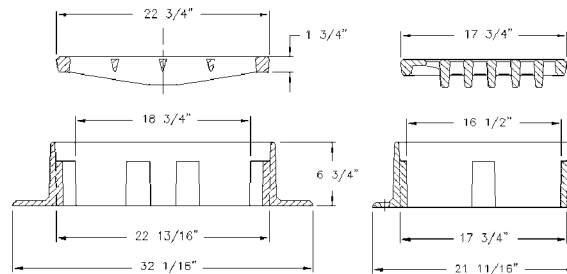
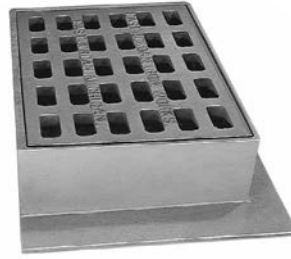
**5020 CATCH BASIN INLET**

Heavy duty

Accepts 5000 grates and covers

With Type M1 flat grate –

Approximate 160 sq. in. open area

**5030 CATCH BASIN INLET**

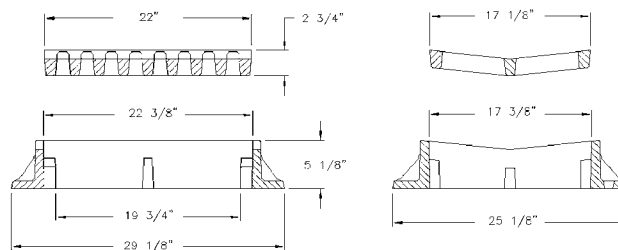
Light duty (Non-traffic)

Concave Inlet with 1 1/4" opening

Approximate 140 sq. in. open area

Options

Ductile grate — 5031

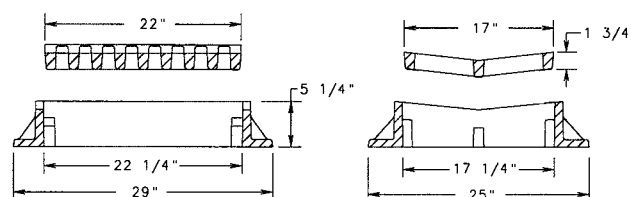
**5031 CATCH BASIN INLET**

Medium duty

Concave grate

Ductile iron frame &amp; grate

Approximate 140 sq. in. open area



Supplied By:

**TRENCHDRAIN**  
**SUPPLY**
**877-903-7246**  
[www.trenchdrainsupply.com](http://www.trenchdrainsupply.com)
